



exhibitor and sponsorship opportunities

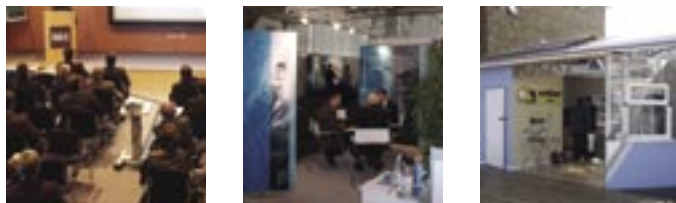
13–15 September 2005

Promote your organisation at this major event for the built environment

The BRE logo consists of the letters "BRE" in a white, bold, sans-serif font, enclosed within a black square border.

BRE

Exhibitor opportunities



BRE's annual low carbon and renewables conference/exhibition has established itself as one of the leading events in the construction industry's calendar. It provides delegates with an opportunity to find out about the latest advances in renewable and innovative energy efficiency technologies, and enables exhibitors to showcase their products and gain extra visibility through sponsorship.

Increased concern about the momentum of climate change, together with new regulations on the energy and environmental performance of buildings, mean the 2005 event will draw more attention than ever. BRE expects some 2000 visitors to pass through the gates of resource05.

The three-day programme of seminars and presentations, delivered by leading experts from across the industry, will demonstrate how technology is being used to provide low carbon, energy efficient solutions in non-domestic buildings, housing, and new communities.

The exhibition that runs alongside the conference offers companies the chance to showcase their products either in the main marquee or in the adjoining outdoor demonstration area where full-scale working exhibits can be erected. Few events offer the space to display on this scale and we find this feature attracts large numbers of visitors.

Registration and refreshment breaks take place in the exhibition marquee, guaranteeing regular flows of visitor traffic. Press Centre facilities will be available throughout the three days and there will be extensive media coverage both before and after the event.

resource05 will take place on 13-15 September, 2005 at BRE's headquarters in Watford – a 75 acre parkland site that boasts a research campus with large-scale test facilities, two conference suites, and landmark low-energy buildings.

The event will be heavily promoted to the energy, environment and construction sectors and has the support of Government, professional bodies and leading industry figures.

Generate new business opportunities

Exhibiting at resource05 will:

- enable you to make new contacts and to meet existing clients
- help you to create networking opportunities with other like-minded exhibitors
- generate good quality leads
- provide a focused platform to launch new products
- give you access to new markets.

Who will you meet?

resource05 will attract high calibre visitors:

- policymakers and regulators
- chief executives
- project managers
- architects, designers, surveyors and building services engineers
- house builders and social housing providers
- energy companies
- national media
- ... and many more!

resourceO4

Comments generated from last year's event:

" A very good event in terms of the quality and number of leads generated from the exhibition."

" The lectures were great – I wanted to attend more of the seminars and demonstrations which were being run."

Sponsorship opportunities



How much will it cost to exhibit?

Stands at resource05 are available at a cost of £2250 for a 3m x 3m exhibition space. We also have spaces for large outdoor exhibits.

BRE's events team will work with you to specify your exhibition requirements and help you to achieve the maximum return on your investment. If you wish to organise a product launch or run your own workshop, we will help arrange this.

Early-bird discounts

Companies that sign up for exhibition space before the end of February 2005 will benefit from the organiser's early-bird discount scheme, which reduces stand prices by as much as £500.

Sponsorship options

Raise your visibility a notch higher by taking advantage of the sponsorship opportunities that are available. There are many ways to gain exposure for your company, either on a grand scale or more modestly; simply select the option that best matches your objectives and budget.

Options include sponsorship of:

- the resource05 event guide
- www.resource05.com
- official carrier bags
- registration areas
- resource05 – 'You Are Here' boards
- resource05 banners
- a keynote presentation
- event catering.

What do you get for your money?

The exhibition fee includes:

- space hire for the duration of the event
- publicity in pre-conference electronic newsletters
- free editorial entry in the Official Event Catalogue, which many visitors will use as a supplier guide
- free conference tickets for your clients
- use of press centre facilities
- your organisation's name and stand details on the BRE event website
- free parking.

Seminar programme

The three-day conference offers a tightly packed programme of seminars and workshops delivered by leading figures from across the industry. It will promote greater understanding of the issues associated with renewables and provide examples of how low carbon technologies are being successfully integrated into a range of different building types. Most importantly, resource05 will equip delegates with practical information they can take back and start using immediately.

Day 1: Non-domestic buildings

Day 2: Housing

Day 3: Communities

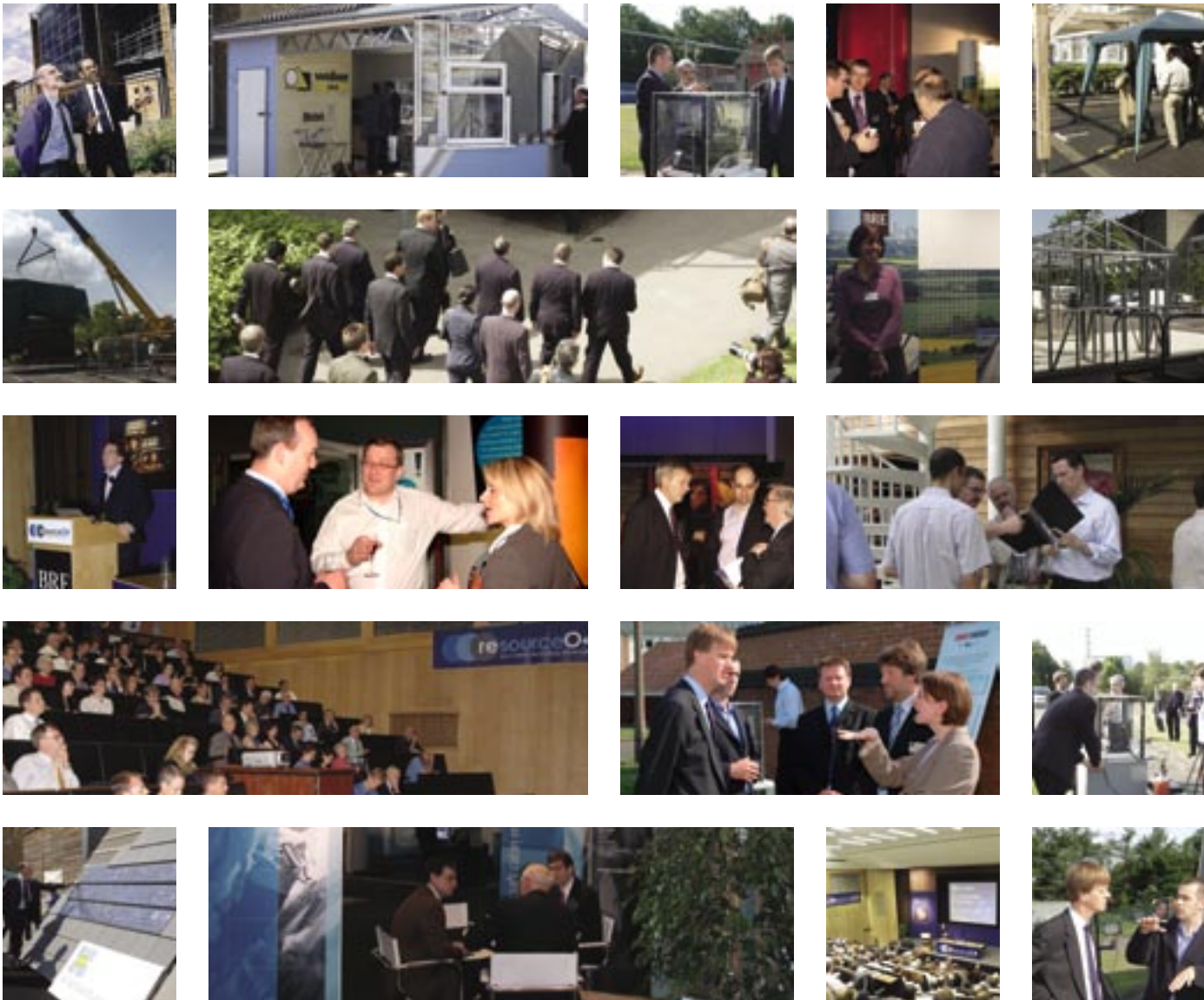


Who should attend?

Manufacturers and suppliers of low carbon technologies and energy efficient systems and materials including

- Solar thermal
- Advanced insulation
- Photovoltaics
- Innovative cooling
- Heat pumps
- Micro CHP
- Advanced glazing
- Boilers
- Community scale wind turbines
- Small scale micro hydro
- Biomass boilers
- Fuel cells
- Lighting
- Energy management and control systems

Previous events



For more information, please contact:

BRE Events, BRE, Garston, Watford, WD25 9XX

T 01923 664800

F 01923 664790

E resource05@bre.co.uk

W www.resource05.com